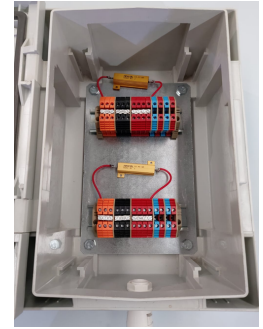


# TECHNICAL DATASHEET

## Connection Box P300

A lockable cabinet which facilitates performance monitoring measurements of CPT corrosion protection systems

### Monitoring

The surface mounted lockable cabinet, with hinges on the long side, facilitates performance monitoring measurements of CPT corrosion protection systems. This includes:

- System driving voltage
- Anode current
- Reinforcing steel potential (provided reference cell is used)

The measurements can be taken with a hand held digital voltmeter.

### Future Treatment

Following initial treatment the terminals inside the connection box allow the measurement of currents and potentials and allow the option to re-apply DC voltage at any future time.

### Dimensions

Connection blocks inside the box fit onto a standard DIN rail which allows customisation to suit specific site requirements.

Length	Width	Depth
300mm ( 11 ¾" )	200mm ( 7 ⅞" )	150mm ( 5 ⅞" )

Other sizes are available

### Material

1. Polycarbonate
2. RAL 7035 – Light grey
3. Temperature resistant up to 80°C

### Ratings

1. Ingress protection: IP66
2. Impact resistance: IK10 +35°C, IK 08 -25°C
3. Electrical insulation: totally insulated
4. Halogen free: yes
5. Flammability rating: UL 94 5VA
6. UV resistance: UL 508
7. Glow Wire Test °C: 960

### Technical and Sales Support

w: [www.cp-tech.co.uk](http://www.cp-tech.co.uk)

t: +44 (0) 115 9724 238

e: [general@cp-tech.co.uk](mailto:general@cp-tech.co.uk)




For technical and sales support please contact us at:

**Concrete Preservation Technologies**

1 Palmer Business Court, Manor House Road, Nottingham, UK, NG10 1LZ

(T) +44 (0) 115 9724 238 (E) [general@cp-tech.co.uk](mailto:general@cp-tech.co.uk)

[www.cp-tech.co.uk](http://www.cp-tech.co.uk)