

# Town Square MSCP

Oldham, UK



**Country:** United Kingdom

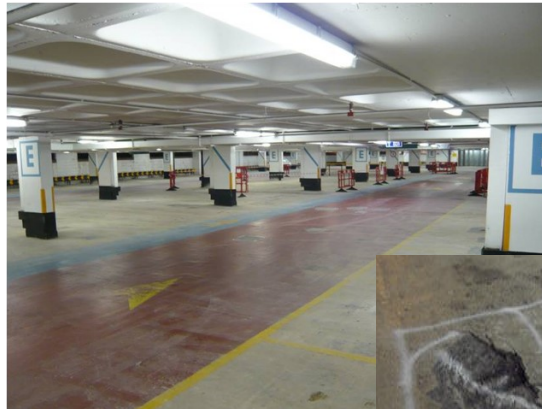
**Timescale:** November-December 2008

**Structure:** Multi-storey car park, waffle slab construction

**Client:** Oldham Council

**CPT Treatment used:**

DuoGuard™ Hybrid Anode™ System



Oldham Town Square MSCP is a waffle slab constructed car park on eight staggered levels.

## Problem

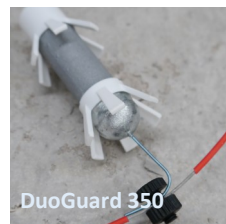
Visual inspection revealed significant areas of spalling/ loose concrete along with exposed reinforcing bar in certain areas. The spalling was located primarily on upper levels where protective coatings had underperformed and allowed chloride ingress into the concrete. The presence of chloride contamination was established in running isles, ramps and parking bays as is typical of a MSCP

## Solution Developed

Recognising the potential for future incipient corrosion damage of patch repairs undertaken on the car park, the client specified the use of DuoGuard™ anodes around the periphery of large repairs, and RebaGuard™ anodes within smaller repairs. A trial installation was undertaken to demonstrate ease of application of the anode systems, with current output data indicating a 35 year lifetime.

## Benefits

Installation of the RebaGuard™ and DuoGuard™ anodes was undertaken at night, minimising disruption to clients and allowing the car park to remain open throughout the renovation works.



## CPT Products Used:

- ◆ DuoGuard™ 350
- ◆ DuoCrete SD Mortar
- ◆ RebaGuard™
- ◆ MN15 Ref. electrodes

For technical and sales support please contact us at;  
**Concrete Preservation Technologies Ltd,**  
Unit 1, Palmer Business Court  
Manor House Road  
Long Eaton, Nottingham  
United Kingdom NG10 1LR

t: +44 (0)115 9724 238  
f: +44 (0)115 9220 316  
[www.cp-tech.co.uk](http://www.cp-tech.co.uk)



CORROSION PREVENTION ASSOCIATION  
CATHODIC PROTECTION • REBAR/ANODES • CHLORIDE EXTRACTION  
SACRIFICIAL ANODES • CORROSION MONITORING



**Cert No. 10159**  
**ISO 9001**